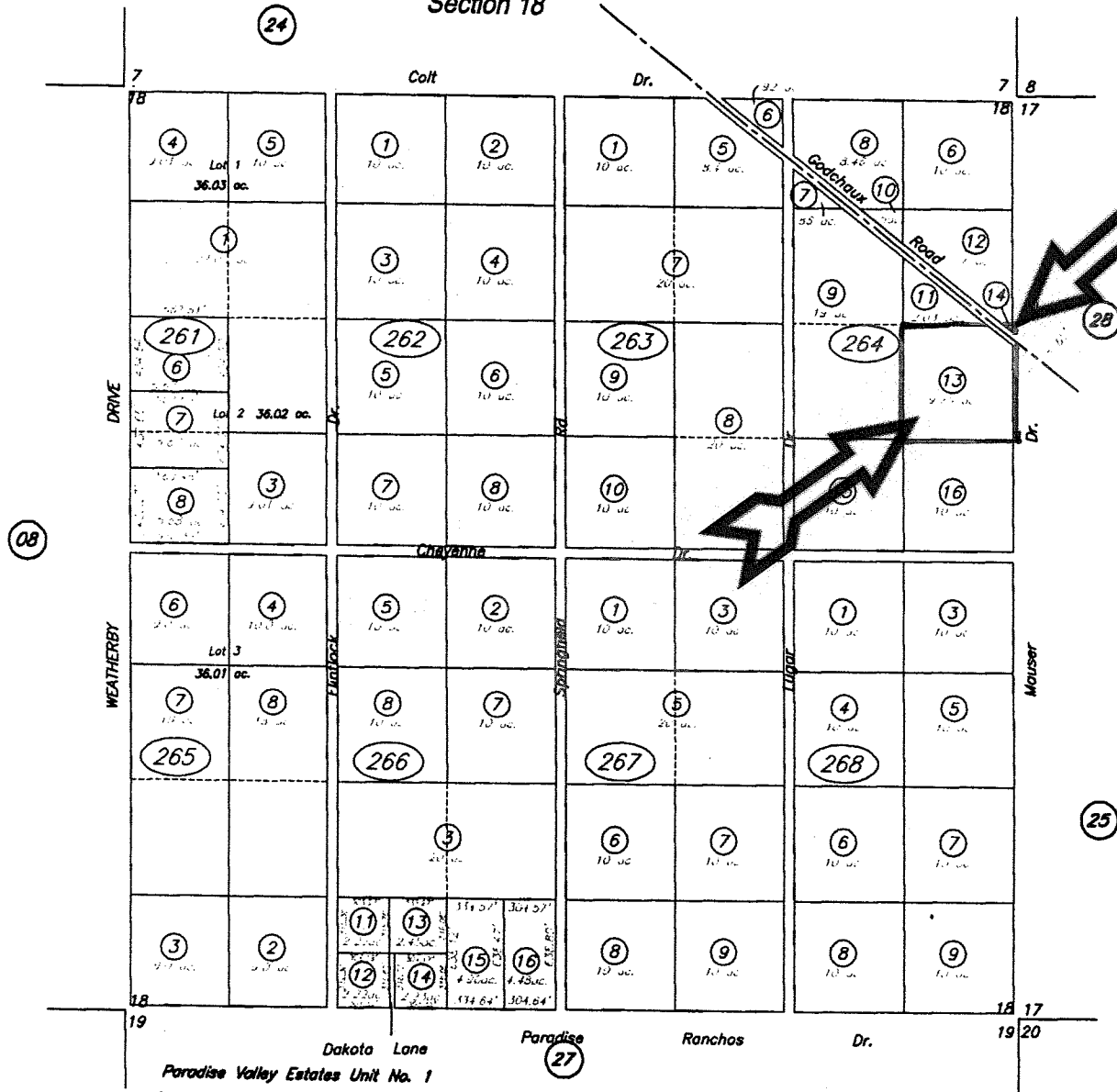


Section 18

06-26



T.39N., R.39E.



1" = 600'
N.D.R.M.

HUMBOLDT COUNTY

NOTE: This plot is for assessment purposes only and does not represent a survey of the lands on this plot.

HUMBOLDT COUNTY ASSESSOR'S OFFICE
REININGOLD, NEVADA 89445

Paradise Valley Estates Unit No. 1
(File No. 1996-2945 / May 10, 1996 / P.M. J.H.M. II)
(File No. 1997-1962 / Jan. 28, 1997 / P.M. E.E.M.)