

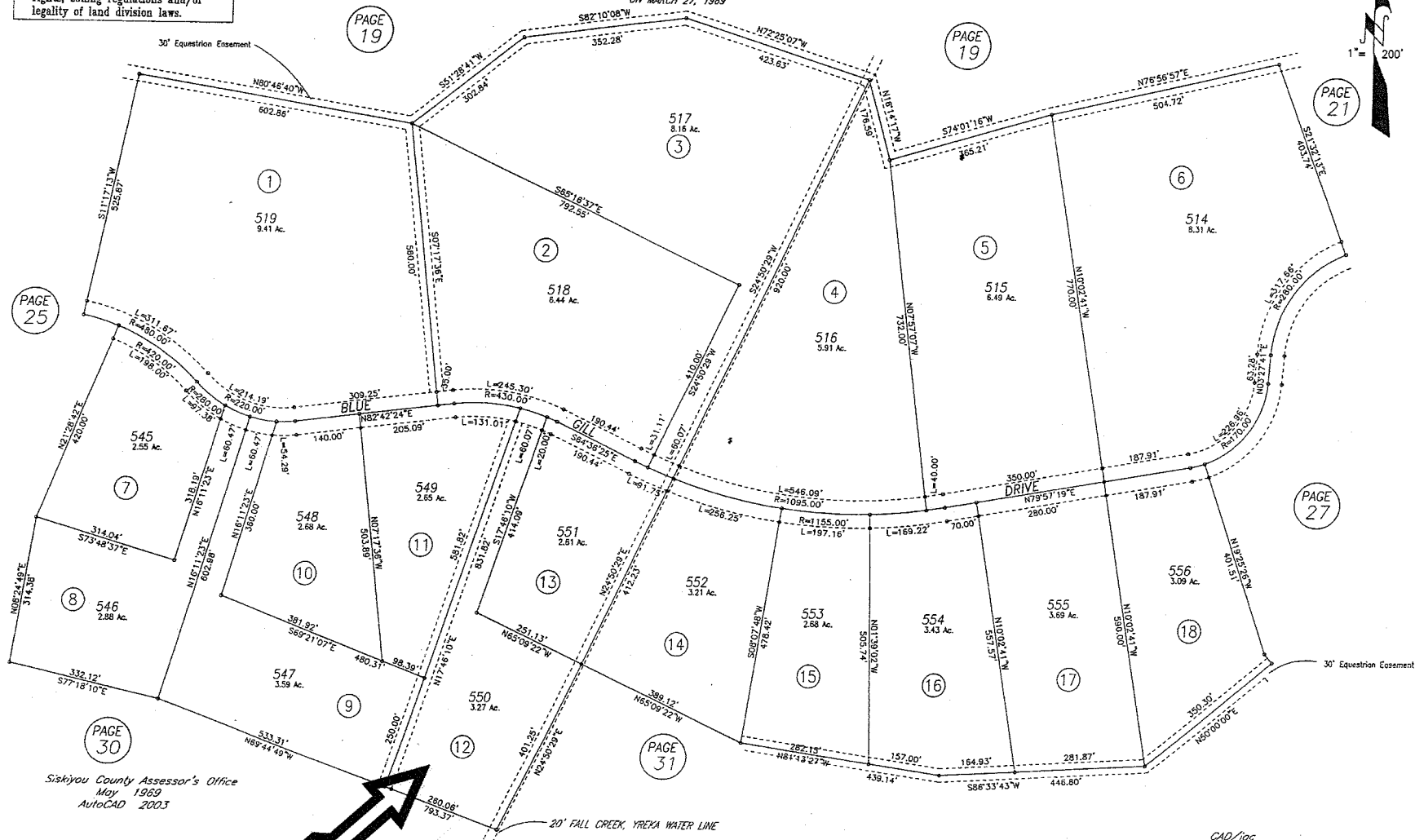
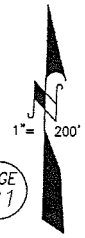
KLAMATH RIVER COUNTRY ESTATES UNIT 4

RECORDED IN T.M.B. 4 PAGE 148
ON MARCH 27, 1989

Tax Area Code
52-00*

104-26

NOTE: This map is for assessment purposes only and is not for the intent of interpreting legal boundary rights, zoning regulations and/or legality of land division laws.



Siskiyou County Assessor's Office
May 1989
AutoCAD 2003

CAD/joc