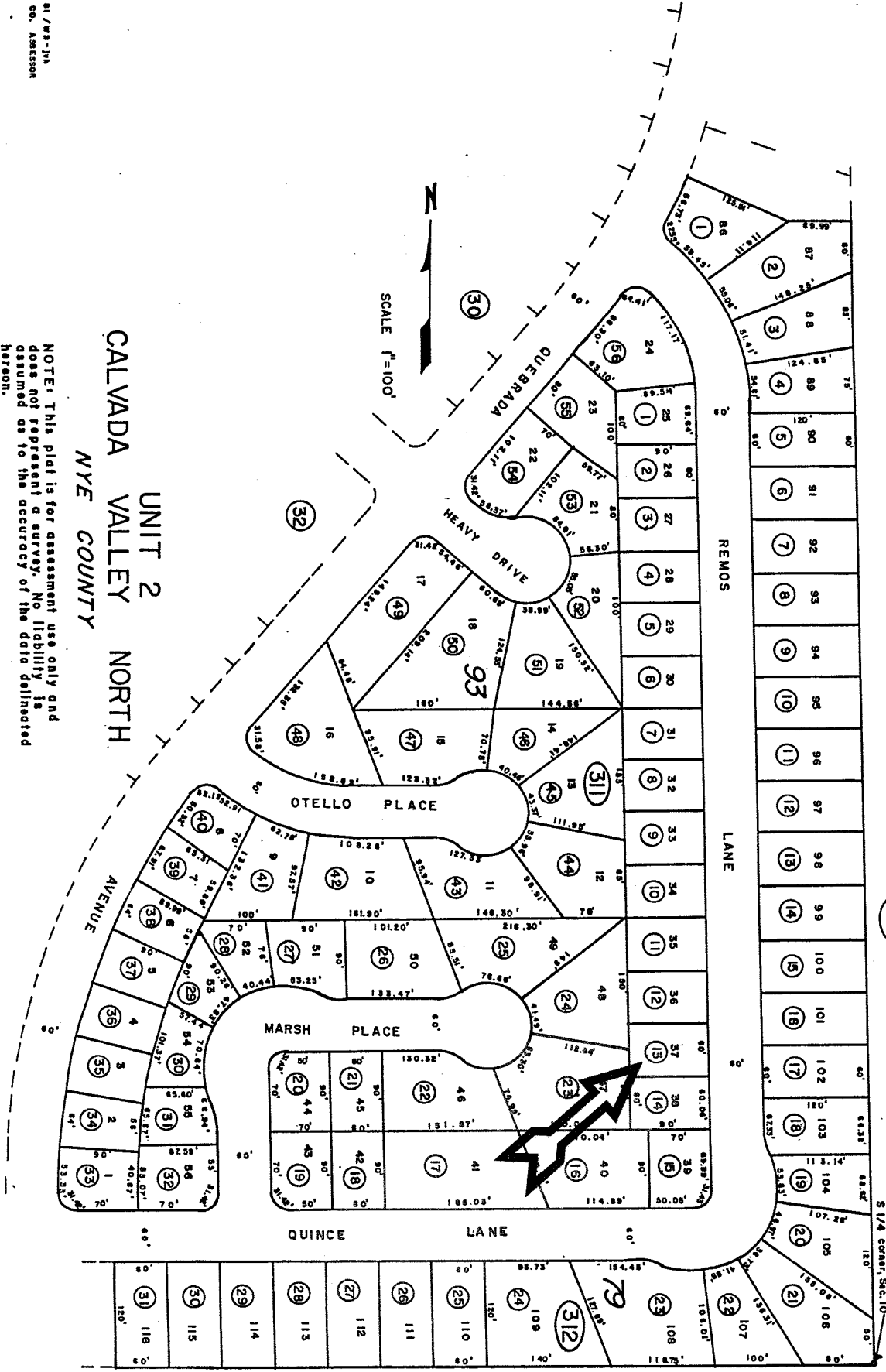


T. 19S., R. 53 E.
PORT. OF SEC. 10

Bk.
32

30 - 31



UNIT 2
CALVADA VALLEY NORTH
NYE COUNTY

NOTE: This plat is for assessment use only and does not represent a survey. No liability is assumed as to the accuracy of the data delineated hereon.

MAN - 21 / WA - 114
NYE CO. ASSESSOR

Deliver