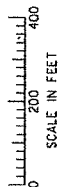


THIS MAP WAS PREPARED FOR ASSESSMENT PURPOSE ONLY

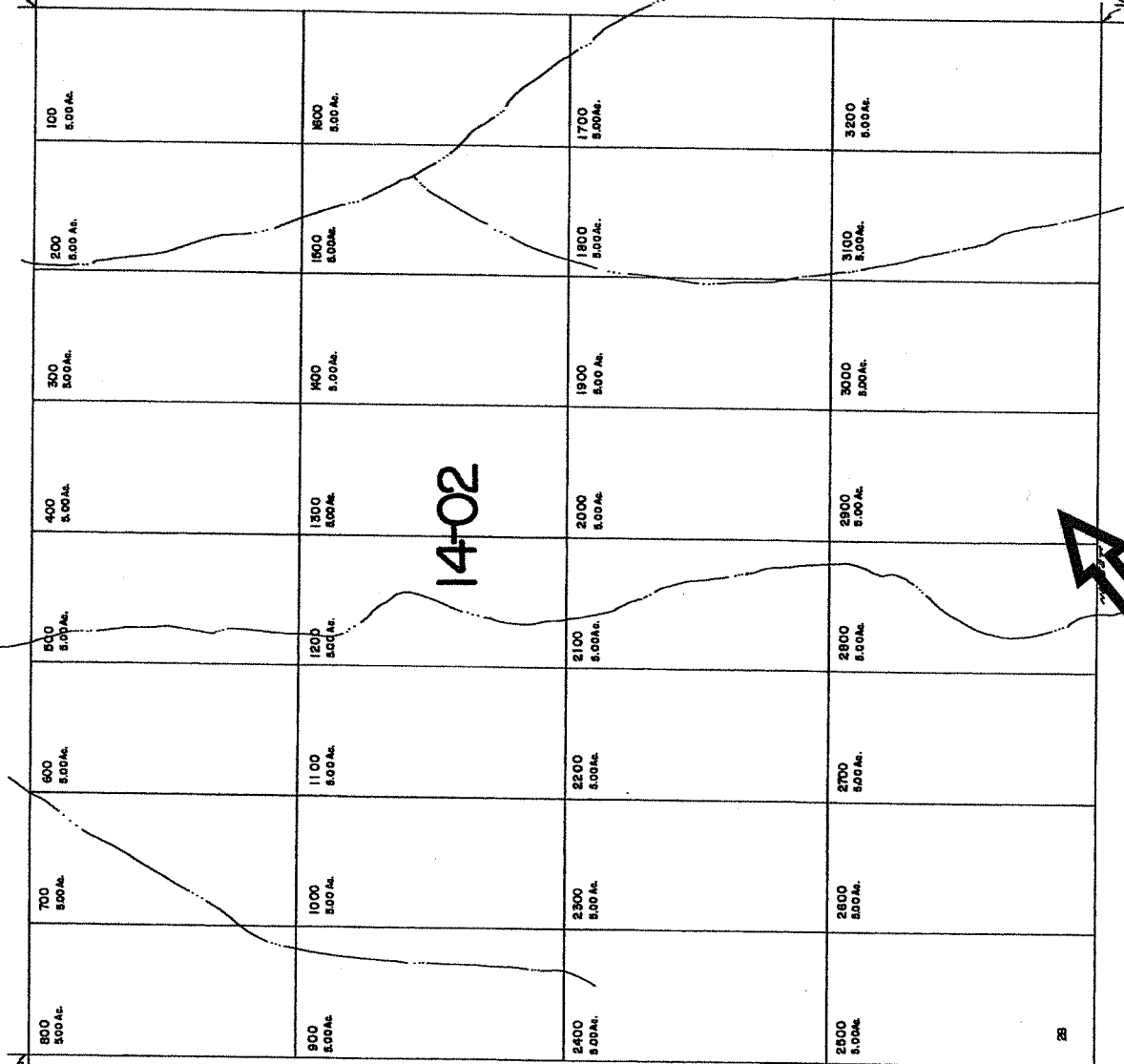
SW 1/4 SEC. 28 T. 27S. R. 18E. W.M.
LAKE COUNTY

27 18 28C



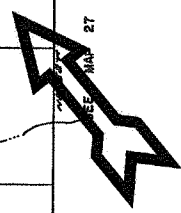
SEE MAP 27 18

CENTER SECTION



SEE MAP 27 18

SEE MAP 27 18



SEE MAP 27 18

29 28

32 35

27 18 28C

Handwritten notes: 'L.V. 10/10/11', 'L.V. 10/10/11', and the number '8'.