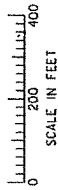


THIS MAP WAS PREPARED FOR
ASSESSMENT PURPOSE ONLY

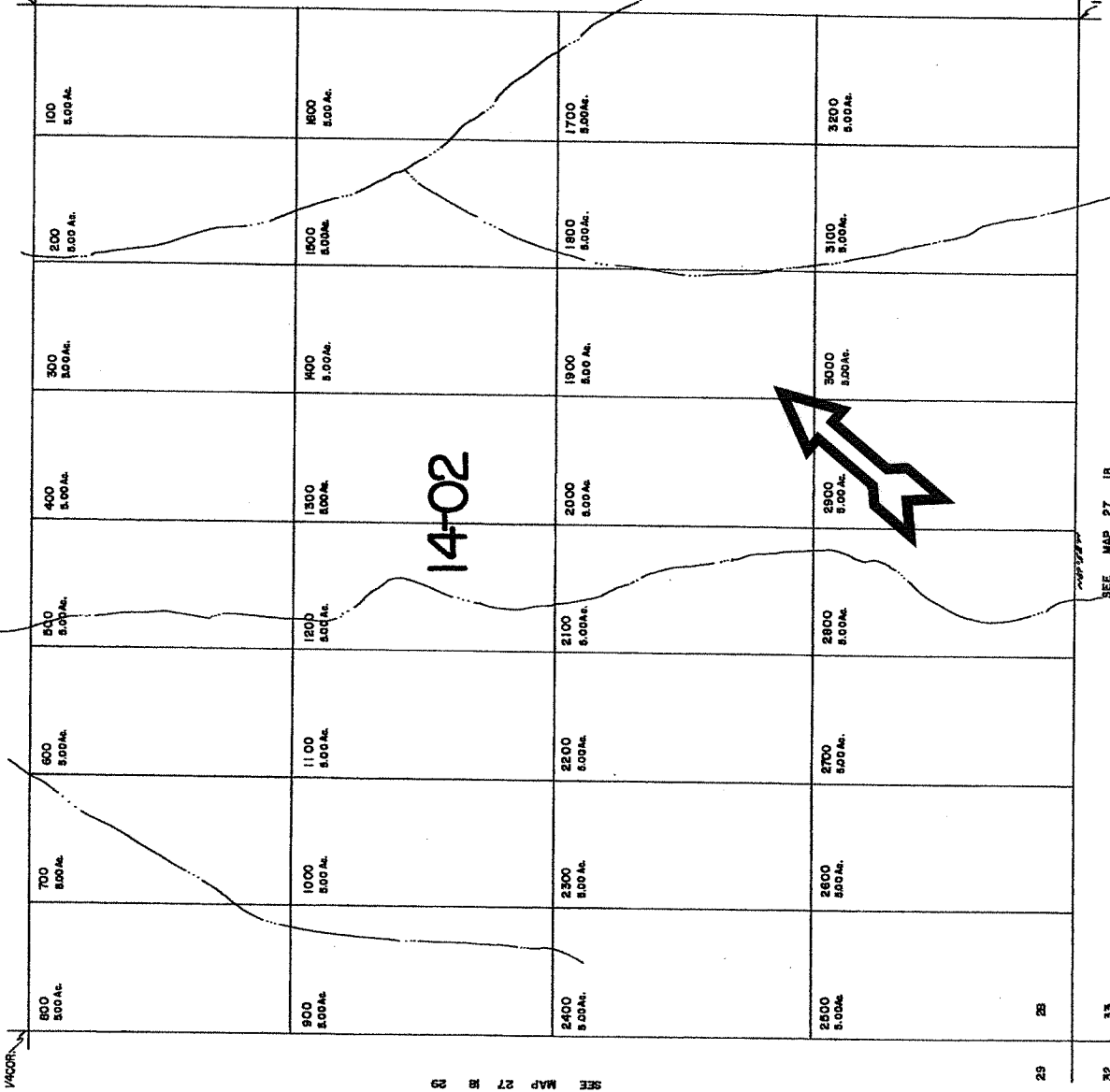
SW 1/4 SEC. 28 T. 27S. R. 18E. W.M.
LAKE COUNTY

1" = 200'

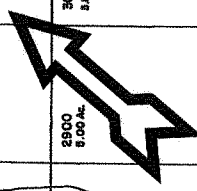


SEE MAP 27 18

CENTER SECTION



14-02



27 18 28C
8

27 18 28C

27 18 28C