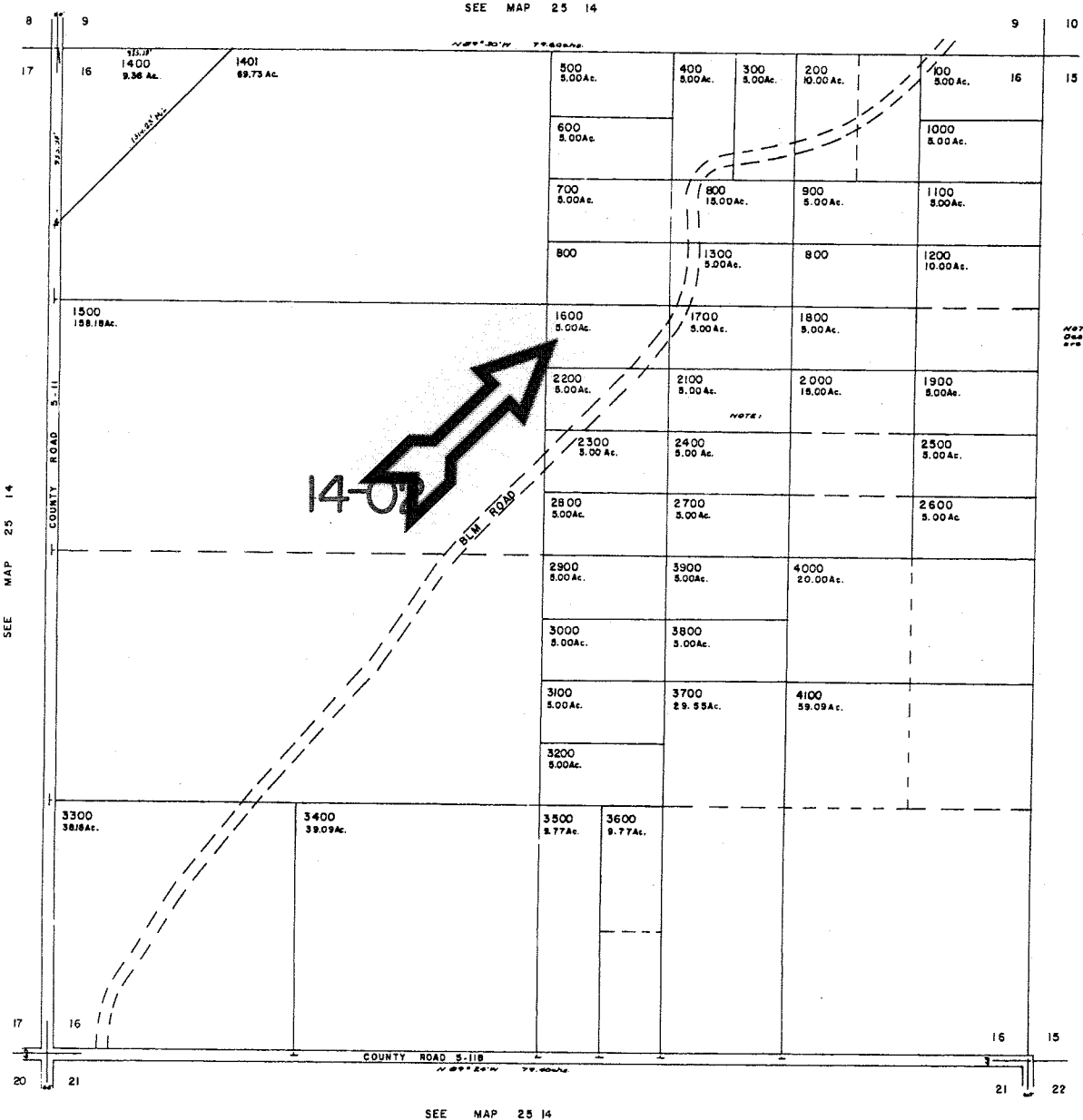


N₂ NW₄ SW₄ NE₄
 SECTION 16 T.25S. R.14E. W.M. 5^{ac}
 LAKE COUNTY
 1" = 400'

THIS MAP WAS PREPARED FOR
 ASSESSMENT PURPOSE ONLY

25 14 16

SCALE IN FEET
 0 400 800



NOTE:
 Descriptions
 see pg 14-15

NOTE:

SEE MAP 25 14

SEE MAP 25 14

SEE MAP 25 14

25 14 16